



Wilker's

Custom Horse Products

Catalog

130 Seaboard Lane Suite A-14
Franklin, TN 37067
www.Wilkers.com

615-377-6077 (phone)
615-377-0528 (fax)
800-942-1275 (toll-free)
WilkersHorse@aol.com (email)

Orders can be placed by phone, fax or email 24 hours a day, 7 days a week.



Owner Marvin Wilker

“Designed for horse lovers by horse lovers...”

From then to now! Over 50 years of providing saddle pads, leg wraps and other horse accessories to fellow horse lovers, all over the world. The black and white photo shown above was taken in 1974 at a local horse show. I'm riding my amateur horse "Oil Sands", using one of the first saddle pads I ever made. My sweet grey mare has long since gone, but I still have that saddle pad!

I have been very fortunate to have been able to combine a love of horses with a business that evolved from that passion. Everything manufactured at Wilker's has been a collaborative effort of close horse friends, loyal employees, and other horse enthusiasts who have given their ideas and encouragement to develop products that work. All of our products are made right here in the USA.

I am constantly looking for new ideas to help deal with all the special problems or needs that so many horse owners run into. Always feel free to make suggestions, or give your opinions. I know from personal experience that no other hobby/sport has proven the saying "necessity is the mother of invention" to be more accurate than when dealing with horses. I have had more than my share of horses who have found "that one nail in the paddock"!

May you have many happy hours with your horses!!
Thank you for your support.

Wilker's Custom Horse Products
130 Seaboard Lane Suite A-14
Franklin, TN 37067
WilkersHorse@aol.com (email)
615-377-6077 (phone)
615-377-0528 (fax)
1-800-942-1275 (toll-free)

Orders can be placed by phone, fax, or email.

Show Pad Options

Choose from either all fleece or 100% cotton flannel quilted bottom.

Styles available: Pony, All Purpose, Close Contact, Dressage

Patterns for many other brands of saddles available.

Sizes:

Leadline	13" - 13 1/2"	14" - 14 1/2"	15" - 15 1/2"	16" - 16 1/2"
	17" - 17 1/2"	18" - 18 1/2"	19" - 19 1/2"	20" - 20 1/2"

Schooling Pad Options

Choose from a straight spine or a contoured spine.

Straight Spine



Contoured Spine



Modern Cut



Sizes available: All Purpose Pony, All Purpose Horse, All Purpose Oversize (straight spine and contour spine only), Dressage Pony, Dressage Horse

Straight Spine			Contoured Spine			Modern Cut			
	Spine	Drop		Spine	Drop	Width		Spine	Drop
AP Pony	22"	17.5"	Pony	20"	18.5"	23"	Pony	23.5"	16.5"
AP Horse	24"	20"	AP Horse	21.5"	20"	25.5"	Horse	25.5"	19"
AP Oversize	26"	21"	AP Oversize	23.5"	20"	27.5"	Dressage	25.5"	22"
Dressage Horse	25.5"	21"	Dressage Horse	25"	22"	26"			
			Dressage Pony	20.5"	19"	21.5"			

Billet straps, girth straps, or gripper patches can be added to any pad, depending on your preference.

Novelty and Plaid pads automatically include girth straps unless otherwise specified.

Call, email, or check our website for an up-to-date inventory of our Novelty Prints and Plaids.

Show Pads



A. Style #01
Our most popular show pad. Fleece top with no extra foam for maximum contact with the horse.



D. Style #02C
This pad offers an extra 1/2" of heart shaped foam from pommel to cantle. The heart shape offers some extra padding through the withers.



G. Style #04B
This pad offers an extra 1" of foam from pommel to cantle plus 2" of foam in the cantle. This is our thickest pad, it protects the horse's back while lifting the cantle for the rider.



B. Style #02A
This pad offers an extra 1/2" of foam from pommel to cantle. The flap area is not padded to allow maximum contact with the horse.



E. Style #03
This pad has an extra 1" or 2" of foam sewn into the cantle to build up the seat area of the pad.



H. Style #04C
A unique combination of 1/2" heart foam running from pommel to cantle, plus an extra 1" of foam in the cantle area. This pad offers wither padding and a slight lift in the cantle.



C. Style #02B
This pad offers an extra 1" of foam from pommel to cantle. The flap area is not padded to allow maximum contact with the horse.



F. Style #04A
This pad offers an extra 1/2" of foam from pommel to cantle plus a 2" foam cantle. It protects the horse's back while lifting the cantle for the rider.



I. Style #04D
A very popular saddle pad for those riders who use gel pads, this pad has a wide velcro opening at the pommel that allows the gel pad to be inserted and removed with ease.

Show Pads



A.



B.



C.



D.



E.



F1.



F2.

A. Style #06

We've sewn an extra 1" of foam into the pommel area only to help protect horses with sensitive withers or to lift the pommel of the saddle.

C. Style #22

The center of this pad is 1/2" quilted foam between a broadcloth top and cotton flannel bottom. A rolled-fleece edge makes this pad show-ready!

E. Style #27CP

The Companion Pad, this fleece-edged pad can be used along with our therapeutic wither relief pad (Style #25WP) for showing. The quilted body comes in a variety of colors so you can coordinate with your baby pads and wither pads. See the Colors Available page on the back cover for all the color choices we offer.

B. Style #07

A square saddle pad available in either all fleece or a fleece top with a cotton quilted bottom. We offer any size combination, standard sizes being 24"x24", 30"x30", and 24"x36". 1/2" foam can be added for extra padding.

D. Style #24

One of our best sellers, the original "cling-on" saddle pad. This pad features four unique gripper patches: two located on the underside of the pad against the withers and two on the fleece top under the knee rolls. These latex-free gripper patches help hold the pad in place, making conventional straps unnecessary.

F1 and F2. Style OG - The Olympic Gripper (Top and Bottom of pad pictured)

This pad is the culmination of over 35 years of dedicated research. The 1/4" thick small diamond quilted center makes this our closest contact pad, while the fleece edge helps maintain the saddle's position in the center. The strategically placed gripper patches ensure no slippage against the horse or the saddle, while preserving the sweat-wicking abilities of the quilted flannel bottom.

Schooling and Novelty Pads



A.



F.



B.



G.



C.



H.



D.



I.



E.



J.

K. Style #35

The Medium Weight pad is compact yet sturdy with a quilted flannel bottom and quilted broadcloth top. Modern cut for wither-conforming shape. Your choice of body, trim, and piping.



K.

A. Style #14

A polar fleece top and quilted cotton flannel bottom with 1/2" foam center.

See the Colors Available on the back cover.

B. Style #15

100% cotton flannel quilted on top and bottom with 1/2" foam center. White body, your choice of trim color(s).

C. Style 17Q

White quilted broadcloth top and flannel bottom. The center is 1/2" foam and poly fiber fill. Your choice of trim color(s).

D. Style #17C

The "Colors" saddle pad has a colored broadcloth top and a quilted flannel bottom. Your choice of body and trim colors. See Colors Available on the back cover.

E. Style #19

Small square diamond quilted pad with broadcloth top and flannel bottom. The center is 1/2" foam and poly fiber fill. This quilting style makes for a dense but hearty pad. Your choice body color (black or white) and trim color(s).

F. Style #19FB

A #19 pad with an additional 1/2" foam and fleece in the seat area. Girth straps and two strategically placed gripper patches keep the pad in place.

G. Style #23

Our famous Baby Pad. Dual sided broadcloth quilted on 1/4" poly fiber fill. Your choice of body and trim colors.

H. Style WC - The Winning Colors Pad

A quilted baby pad top and flannel quilt bottom, all include trim and piping along with girth straps, underside grippers and a contoured spine. Your choice of body, trim and piping colors.

I. Styles #16F and #26N

Plaid and Novelty Pads. Your choice of print over a quilted flannel bottom. Girth straps included. Contact us or see our website for an up to date list of prints we have in stock.

J. Style ROY - The Royale

This pad is all-in-one! Our classic #17 or #19 schooling pad is combined with a 1/2" thick foam halfpad. Like all our pads, The Royale is machine washable and dryer safe. All Royales include girth straps, contour spine, and your choice of body, trim, and piping.

Partial Pads



A. Style #08

Fleece cover over 2" of foam. Unique shape allows the "handle" of cantle lift to fit into the underside of saddle, helping the pad stay in place.

B. Style #09N

The narrow partial pad; available in all fleece or a fleece top with a quilted flannel underside. Extra foam can be added.

C. Style #09W

The wide partial pad; available in all fleece or a fleece top with a 100% cotton quilted flannel underside. Extra foam can be added.

D. Style #09G

Gel Pad Cover
Velcro opening, standard or large sizes available.
Available in your choice of baby pad color.

E. Style #25WP

This partial pad has a unique opening at the withers to help relieve pressure the saddle places on the horse's back. The quilted underside and fleece top are reversible. Available in white or your choice of babypad color!

F. Style #G13D

A pommel pad made out of our baby quilt material with a gripper surface on both the top and bottom to help keep your saddle in place. Available in your choice of babypad color.

G. Style #13D

Available in all fleece or fleece with a cotton quilted bottom. Perfect for those horses that need just a little extra padding under the pommel. Order style #13DF to get 1" of foam added to it.

H. Style #19BP

A Small diamond quilt half pad that is reversible. The other side is made of our standard white fleece and you can pick the trim color. Use it alone or with another pad for extra protection.

I. Style #14BP

Polar Fleece Half Pad
Polar Fleece over 1" of foam and a quilted flannel bottom. Available in your choice of Polar Fleece body and trim colors.

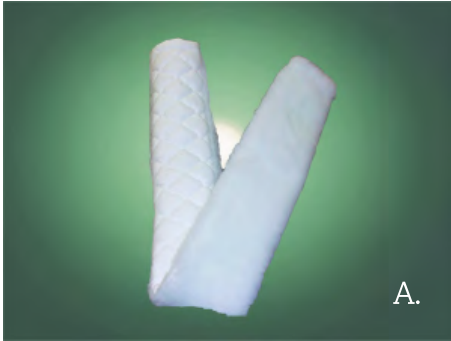
J. Style MBP

Suede Top Memory Foam Half Pad
Suede top, cotton quilted bottom, 1" Memory foam center. Fills in gaps under and around saddle, providing superior shock absorption.
Available in your choice of body and trim colors.

K. Style SBP

Suede Half Pad
Suede top, small diamond cotton quilted bottom, 1/2" open cell foam center.
Available in your choice of body and trim colors.

Tack Accessories



A. Style #11
Girth Cover.
Available in all fleece or fleece with a cotton quilted bottom. Pony and Dressage sizes available. Sizes range from 24" to 56." Girth covers are also available in Novelty prints, Plaids, or Colored Polar Fleece.



B. Style #10
Cribbing Strap Cover.
Available in all fleece or fleece with a cotton quilted bottom. Also available with Novelty Print, Plaid, or Colored Polar Fleece top.



C. Style MM
The Mighty Mitt.
Use it to brush, shine, or wash your horse. Available in different colors or all white. You can even polish your boots with it!



D. Style #10R
Rein Covers
All fleece covers for reins to prevent neck rubs. Slip on. Sizes 12", 14", 16", 18" or custom sizes available. 1.25" opening. Sold in pairs.

Puppy Pawsturepedics

Wilker's Dog Beds are available in a variety of materials, sizes, and colors for your dog's comfort. We offer them in our standard white fleece, which has proven to be nearly indestructible (perfect for those dogs that get bored and find "projects" while you are away). You can also opt for a fleece bottom and a novelty, plaid, or colored polar fleece top. Standard center is 1" poly fiber fill. Additional foam can be added as well. Standard sizes (fit most crates) are 9" x 14", 10" x 18.5", 14" x 18.5", 18" x 28", and 25" x 40". Custom sizes are also available.



Leg Wraps

All leg wraps are sold in pairs. Standard sizes are 10", 12", 14", 16" and 18".
Custom sizes can be made to order.



LW1 All flannel leg wraps. The center is 3/4" bonded poly fiber fill.



LW2 All broadcloth leg wraps.
The center is 3/4" bonded fiber fill.



LW3 Combo regular leg wraps. A broadcloth top and flannel bottom with a 3/4" bonded fiber fill center.

LW3 and LW4 wraps are also available in any of the broadcloth colors we offer.

LW4 Combo Quilted leg wraps. A broadcloth top over a quilted flannel bottom. The center is 1/2" foam.



LW5 No-Bows. Cotton flannel quilted on top and bottom over 1/2" foam.

Colors Available

Baby Pads and Polar Fleece

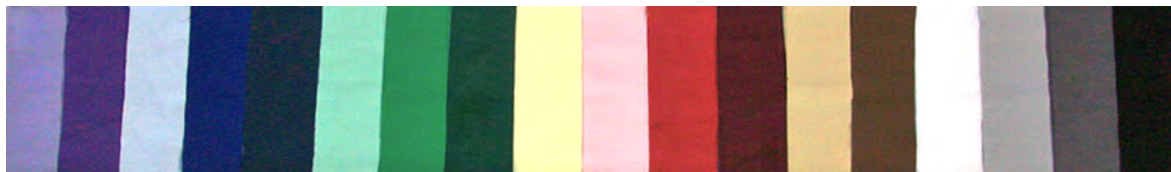


Trim and Piping



Colors from Left to Right: Yellow, Gold, Tan, Pink, Raspberry, Red, Burgundy, Silver, Charcoal, Black, Orange, Light Blue, Medium Blue, Royal Blue, Navy, Teal, Kelly, Hunter, White, Purple, Brown, and Cream.

Broadcloths



Listed from Left to Right: Lilac, Purple, Light Blue, Royal Blue, Navy Blue, Mint, Kelly Green, Hunter Green, Yellow, Pink, Red, Burgundy, Tan, Brown, White, Silver Charcoal, and Black

Memory Foam Half Pad

Suede Colors



Billets and Girth Straps

